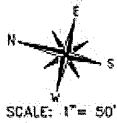


LEGEND & ABBREVIATIONS

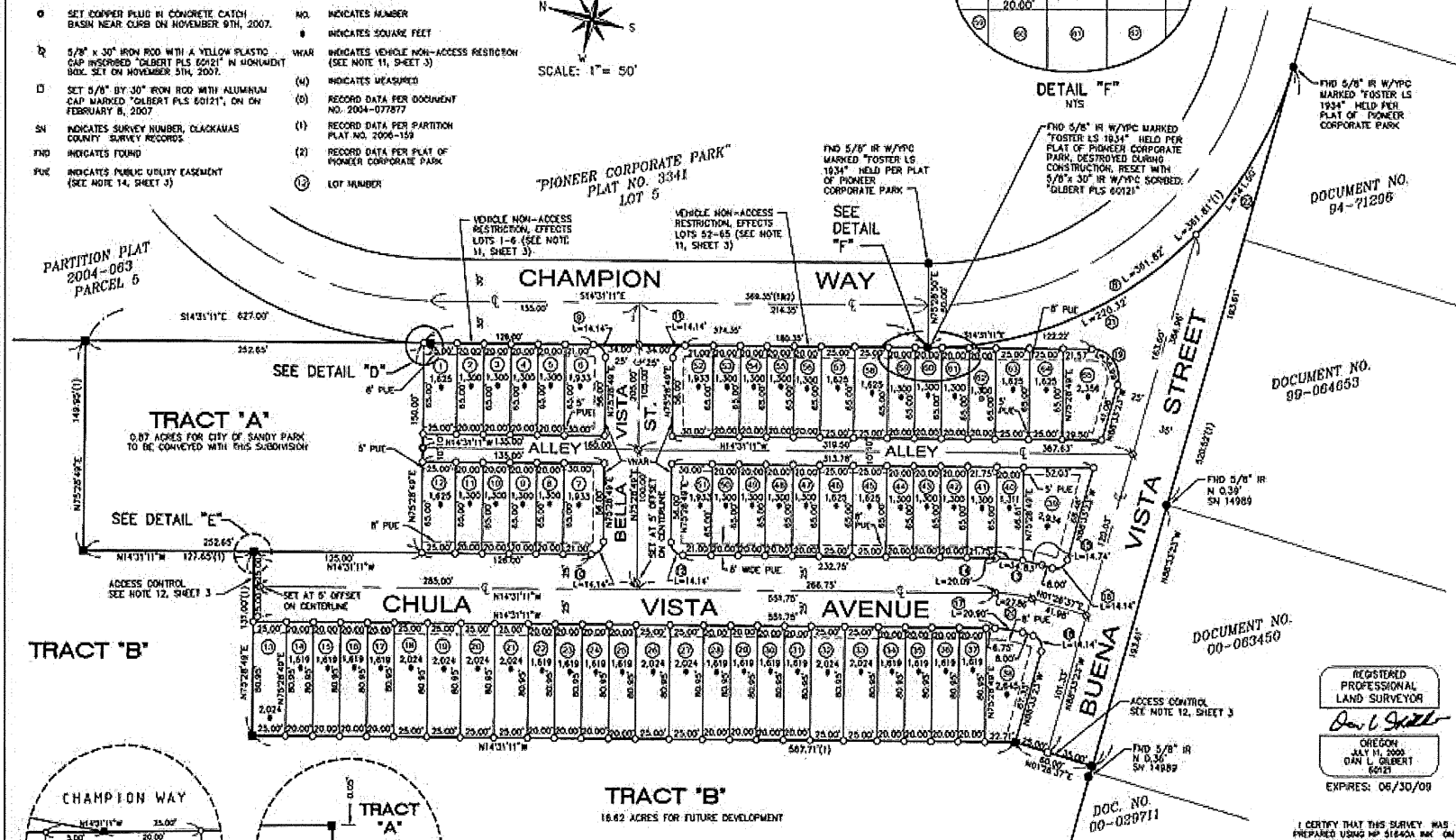
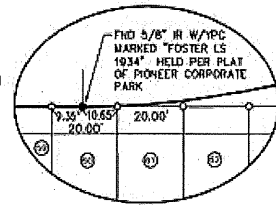
- FOUND MONUMENT AS NOTED HEREON
- FOUND 5/8" BY 30" IRON ROD WITH A YELLOW PLASTIC CAP MARKED "OLBERT PLS 60121" HELD PER PARTITION PLAT NO. 2004-159
- SET 5/8" BY 30" IRON ROD WITH YELLOW PLASTIC CAP MARKED "OLBERT PLS 60121", ON FEBRUARY 8, 2007
- SET COPPER PLUG IN CONCRETE CATCH BASIN NEAR CURB ON NOVEMBER 9TH, 2007.
- ⊕ 5/8" x 30" IRON ROD WITH A YELLOW PLASTIC CAP INSCRIBED "OLBERT PLS 60121" IN MONUMENT BOX. SET ON NOVEMBER 5TH, 2007.
- SET 5/8" BY 30" IRON ROD WITH ALUMINUM CAP MARKED "OLBERT PLS 60121", ON FEBRUARY 8, 2007
- SN INDICATES SURVEY NUMBER, CLACKAMAS COUNTY SURVEY RECORDS
- FND INDICATES FOUND
- PUE INDICATES PUBLIC UTILITY EASEMENT (SEE NOTE 14, SHEET 3)
- R INDICATES IRON ROD
- (TYP) INDICATES TYPICAL
- W/YPC INDICATES WITH YELLOW PLASTIC CAP
- ⊕ INDICATES CENTERLINE
- PP INDICATES PARTITION PLAT
- NO. INDICATES NUMBER
- INDICATES SQUARE FEET
- ⊕ INDICATES VEHICLE NON-ACCESS RESTRICTION (SEE NOTE 11, SHEET 3)
- (W) INDICATES WEASURED
- (R) RECORD DATA PER DOCUMENT NO. 2004-077877
- (1) RECORD DATA PER PARTITION PLAT NO. 2006-159
- (2) RECORD DATA PER PLAT OF PIONEER CORPORATE PARK
- (L) LOT NUMBER

"CHAMPION VILLAGE"

A REPLAT OF PARTITION PLAT 2006-159
 LOCATED IN THE NORTHEAST QUARTER OF SECTION 15
 TOWNSHIP 2 SOUTH, RANGE 4 EAST, WILLAMETTE MERIDIAN
 CITY OF SANDY, CLACKAMAS COUNTY, OREGON
 DATE: FEBRUARY 8, 2007
 CITY OF SANDY FILE NO. 05-003. SUB/FSH



BOOK 140 PAGE 008
 # 4266

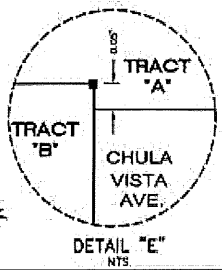
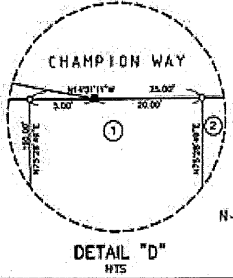


PARTITION PLAT
 2004-083
 PARCEL 5

TRACT 'A'
 0.87 ACRES FOR CITY OF SANDY PARK
 TO BE CONVEYED WITH THIS SUBDIVISION

TRACT 'B'

TRACT 'B'
 18.82 ACRES FOR FUTURE DEVELOPMENT



CURVE DATA

CURVE	LENGTH	RADIUS	DELTA	CHORD	CHORD BEARING	CURVE	LENGTH	RADIUS	DELTA	CHORD	CHORD BEARING
8	301.87	280.00'	74.0737°	537.18'	S51°52'17"E	16	14.14	9.00'	90.0000°	12.73	N62°28'49"E
9	14.14	9.00'	90.0000°	12.73	N62°28'49"E	17	20.90	75.00'	15.5748°	20.83	N68°26'17"W
10	14.14	9.00'	90.0000°	12.73	N62°28'49"E	18	14.14	9.00'	90.0000°	12.73	S48°26'57"W
11	14.14	9.00'	90.0000°	12.73	S69°31'11"E	19	36.99	20.00'	105.8748°	31.94	N30°27'43"E
12	14.14	9.00'	90.0000°	12.73	N62°28'49"E	20	37.28	100.00'	15.5748°	21.77	S68°26'17"W
13	34.80	125.00'	155.7470°	34.71	N62°28'49"E	21	210.32	280.00'	45.5194°	214.87	S37°03'37"E
14	20.00'	125.00'	97.222°	20.00'	N69°54'58"W	22	141.50	280.00'	28.5721°	140.00	S74°04'42"E
15	14.74	125.00'	6.3453°	14.72	N01°06'00"W						

REGISTERED
 PROFESSIONAL
 LAND SURVEYOR
Dan L. Gilbert
 OREGON
 JULY 11, 2005
 DAN L. GILBERT
 6013
 EXPIRES: 06/30/08

I CERTIFY THAT THIS SURVEY WAS
 PREPARED USING HP 3164A BAK ON
 HMM MAP POLYESTER FILM

FIRWOOD DESIGN GROUP, LLC
 SURVEYING ENGINEERING PLANNING
 3710 PROCTOR BLVD., SUITE 11
 SANDY, OREGON 97055
 BUS: (503) 668-3731
 FAX: (503) 668-3708
 CONTACT: DAVE ORTIZ
 ADDRESS: 33690 SE HWY 28
 BURNS, OR 97009
 PHONE: 503 668-4114

SHEET 2 OF 3
 105-02250-000

Public Record