



# MARSHALL RIDGE

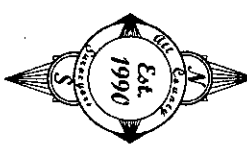
LOCATED IN THE SW 1/4 SEC 24, T 25, R 4E, W.M.  
CITY OF SANDY, COUNTY OF CLACKAMAS, OREGON  
DECEMBER 7, 2018

BOOK 151 PAGE 014

### LEGEND

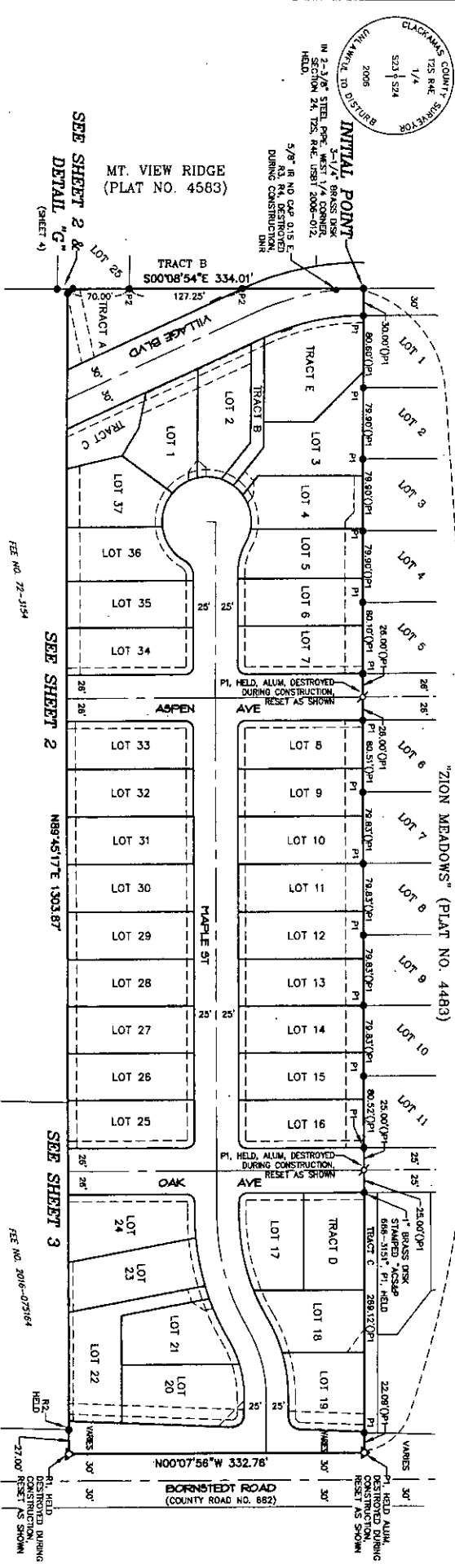
- FOUND MONUMENT AS NOTED HEREON
- SET 5/8" BY 30" IR W/PC MARKED \*KSCAP 503-668-3151 SET ON 10-02-19
- SET 5/8" BY 30" IR W/PC MARKED \*KSCAP 503-668-3151" IN MONUMENT BOX, SET ON 10-02-19
- △ SET 5/8" BY 30" IR W/ALUMINUM CAP MARKED \*KSCAP 503-668-3151", SET ON 10-02-19
- ✕ SET 1" BRASS DISK WITH PUNCH STAMPED \*KSCAP 503-668-3151", SET ON 10-02-19
- FD FOUND MONUMENT
- W/PC INDICATES WITH YELLOW PLASTIC CAP
- IR INDICATES IRON PIPE
- IP INDICATES IRON PIPE, INSIDE BANGLER
- ALUM INDICATES ALUMINUM CAP MARKED

- OP1 INDICATES RECORD OR CALCULATED VALUE PER PLAT NO. 4483 ZION MEADOWS, CLACKAMAS COUNTY PLAT RECORDS. MONUMENT IS A 5/8" IR W/PC MARKED \*KSCAP 503-668-3151, HELD, UNLESS OTHERWISE NOTED
- OP2 INDICATES RECORD OR CALCULATED VALUE PER PLAT NO. 4583 "M.T. VIEW RIDGE", CLACKAMAS COUNTY PLAT RECORDS. MONUMENT IS A 5/8" IR W/PC MARKED \*KSCAP 503-668-3151, HELD, UNLESS OTHERWISE NOTED
- OP3 INDICATES RECORD OR CALCULATED VALUE PER SN 2018-037 MONUMENT IS A 5/8" IR W/PC MARKED \*KSCAP 503-668-3151 UNLESS OTHERWISE NOTED
- OP4 INDICATES RECORD OR CALCULATED VALUE PER SN 2018-163 UNLESS OTHERWISE NOTED
- OP5 INDICATES RECORD OR CALCULATED VALUE PER SN 2018-163 UNLESS OTHERWISE NOTED
- OP6 INDICATES RECORD OR CALCULATED VALUE PER SN 2018-163 UNLESS OTHERWISE NOTED
- OP7 INDICATES RECORD OR CALCULATED VALUE PER SN 2018-163 UNLESS OTHERWISE NOTED
- OP8 INDICATES RECORD OR CALCULATED VALUE PER SN 2018-163 UNLESS OTHERWISE NOTED
- OP9 INDICATES RECORD OR CALCULATED VALUE PER SN 2018-163 UNLESS OTHERWISE NOTED
- OP10 INDICATES RECORD OR CALCULATED VALUE PER SN 2018-163 UNLESS OTHERWISE NOTED
- OP11 INDICATES RECORD OR CALCULATED VALUE PER SN 2018-163 UNLESS OTHERWISE NOTED
- OP12 INDICATES RECORD OR CALCULATED VALUE PER SN 2018-163 UNLESS OTHERWISE NOTED
- OP13 INDICATES RECORD OR CALCULATED VALUE PER SN 2018-163 UNLESS OTHERWISE NOTED
- OP14 INDICATES RECORD OR CALCULATED VALUE PER SN 2018-163 UNLESS OTHERWISE NOTED
- OP15 INDICATES RECORD OR CALCULATED VALUE PER SN 2018-163 UNLESS OTHERWISE NOTED
- OP16 INDICATES RECORD OR CALCULATED VALUE PER SN 2018-163 UNLESS OTHERWISE NOTED
- OP17 INDICATES RECORD OR CALCULATED VALUE PER SN 2018-163 UNLESS OTHERWISE NOTED
- OP18 INDICATES RECORD OR CALCULATED VALUE PER SN 2018-163 UNLESS OTHERWISE NOTED
- OP19 INDICATES RECORD OR CALCULATED VALUE PER SN 2018-163 UNLESS OTHERWISE NOTED
- OP20 INDICATES RECORD OR CALCULATED VALUE PER SN 2018-163 UNLESS OTHERWISE NOTED
- OP21 INDICATES RECORD OR CALCULATED VALUE PER SN 2018-163 UNLESS OTHERWISE NOTED
- OP22 INDICATES RECORD OR CALCULATED VALUE PER SN 2018-163 UNLESS OTHERWISE NOTED
- OP23 INDICATES RECORD OR CALCULATED VALUE PER SN 2018-163 UNLESS OTHERWISE NOTED
- OP24 INDICATES RECORD OR CALCULATED VALUE PER SN 2018-163 UNLESS OTHERWISE NOTED
- OP25 INDICATES RECORD OR CALCULATED VALUE PER SN 2018-163 UNLESS OTHERWISE NOTED
- OP26 INDICATES RECORD OR CALCULATED VALUE PER SN 2018-163 UNLESS OTHERWISE NOTED
- OP27 INDICATES RECORD OR CALCULATED VALUE PER SN 2018-163 UNLESS OTHERWISE NOTED
- OP28 INDICATES RECORD OR CALCULATED VALUE PER SN 2018-163 UNLESS OTHERWISE NOTED
- OP29 INDICATES RECORD OR CALCULATED VALUE PER SN 2018-163 UNLESS OTHERWISE NOTED
- OP30 INDICATES RECORD OR CALCULATED VALUE PER SN 2018-163 UNLESS OTHERWISE NOTED
- OP31 INDICATES RECORD OR CALCULATED VALUE PER SN 2018-163 UNLESS OTHERWISE NOTED
- OP32 INDICATES RECORD OR CALCULATED VALUE PER SN 2018-163 UNLESS OTHERWISE NOTED
- OP33 INDICATES RECORD OR CALCULATED VALUE PER SN 2018-163 UNLESS OTHERWISE NOTED
- OP34 INDICATES RECORD OR CALCULATED VALUE PER SN 2018-163 UNLESS OTHERWISE NOTED
- OP35 INDICATES RECORD OR CALCULATED VALUE PER SN 2018-163 UNLESS OTHERWISE NOTED
- OP36 INDICATES RECORD OR CALCULATED VALUE PER SN 2018-163 UNLESS OTHERWISE NOTED
- OP37 INDICATES RECORD OR CALCULATED VALUE PER SN 2018-163 UNLESS OTHERWISE NOTED
- OP38 INDICATES RECORD OR CALCULATED VALUE PER SN 2018-163 UNLESS OTHERWISE NOTED
- OP39 INDICATES RECORD OR CALCULATED VALUE PER SN 2018-163 UNLESS OTHERWISE NOTED
- OP40 INDICATES RECORD OR CALCULATED VALUE PER SN 2018-163 UNLESS OTHERWISE NOTED
- OP41 INDICATES RECORD OR CALCULATED VALUE PER SN 2018-163 UNLESS OTHERWISE NOTED
- OP42 INDICATES RECORD OR CALCULATED VALUE PER SN 2018-163 UNLESS OTHERWISE NOTED
- OP43 INDICATES RECORD OR CALCULATED VALUE PER SN 2018-163 UNLESS OTHERWISE NOTED
- OP44 INDICATES RECORD OR CALCULATED VALUE PER SN 2018-163 UNLESS OTHERWISE NOTED
- OP45 INDICATES RECORD OR CALCULATED VALUE PER SN 2018-163 UNLESS OTHERWISE NOTED
- OP46 INDICATES RECORD OR CALCULATED VALUE PER SN 2018-163 UNLESS OTHERWISE NOTED
- OP47 INDICATES RECORD OR CALCULATED VALUE PER SN 2018-163 UNLESS OTHERWISE NOTED
- OP48 INDICATES RECORD OR CALCULATED VALUE PER SN 2018-163 UNLESS OTHERWISE NOTED
- OP49 INDICATES RECORD OR CALCULATED VALUE PER SN 2018-163 UNLESS OTHERWISE NOTED
- OP50 INDICATES RECORD OR CALCULATED VALUE PER SN 2018-163 UNLESS OTHERWISE NOTED
- OP51 INDICATES RECORD OR CALCULATED VALUE PER SN 2018-163 UNLESS OTHERWISE NOTED
- OP52 INDICATES RECORD OR CALCULATED VALUE PER SN 2018-163 UNLESS OTHERWISE NOTED
- OP53 INDICATES RECORD OR CALCULATED VALUE PER SN 2018-163 UNLESS OTHERWISE NOTED
- OP54 INDICATES RECORD OR CALCULATED VALUE PER SN 2018-163 UNLESS OTHERWISE NOTED
- OP55 INDICATES RECORD OR CALCULATED VALUE PER SN 2018-163 UNLESS OTHERWISE NOTED
- OP56 INDICATES RECORD OR CALCULATED VALUE PER SN 2018-163 UNLESS OTHERWISE NOTED
- OP57 INDICATES RECORD OR CALCULATED VALUE PER SN 2018-163 UNLESS OTHERWISE NOTED
- OP58 INDICATES RECORD OR CALCULATED VALUE PER SN 2018-163 UNLESS OTHERWISE NOTED
- OP59 INDICATES RECORD OR CALCULATED VALUE PER SN 2018-163 UNLESS OTHERWISE NOTED
- OP60 INDICATES RECORD OR CALCULATED VALUE PER SN 2018-163 UNLESS OTHERWISE NOTED
- OP61 INDICATES RECORD OR CALCULATED VALUE PER SN 2018-163 UNLESS OTHERWISE NOTED
- OP62 INDICATES RECORD OR CALCULATED VALUE PER SN 2018-163 UNLESS OTHERWISE NOTED
- OP63 INDICATES RECORD OR CALCULATED VALUE PER SN 2018-163 UNLESS OTHERWISE NOTED
- OP64 INDICATES RECORD OR CALCULATED VALUE PER SN 2018-163 UNLESS OTHERWISE NOTED
- OP65 INDICATES RECORD OR CALCULATED VALUE PER SN 2018-163 UNLESS OTHERWISE NOTED
- OP66 INDICATES RECORD OR CALCULATED VALUE PER SN 2018-163 UNLESS OTHERWISE NOTED
- OP67 INDICATES RECORD OR CALCULATED VALUE PER SN 2018-163 UNLESS OTHERWISE NOTED
- OP68 INDICATES RECORD OR CALCULATED VALUE PER SN 2018-163 UNLESS OTHERWISE NOTED
- OP69 INDICATES RECORD OR CALCULATED VALUE PER SN 2018-163 UNLESS OTHERWISE NOTED
- OP70 INDICATES RECORD OR CALCULATED VALUE PER SN 2018-163 UNLESS OTHERWISE NOTED
- OP71 INDICATES RECORD OR CALCULATED VALUE PER SN 2018-163 UNLESS OTHERWISE NOTED
- OP72 INDICATES RECORD OR CALCULATED VALUE PER SN 2018-163 UNLESS OTHERWISE NOTED
- OP73 INDICATES RECORD OR CALCULATED VALUE PER SN 2018-163 UNLESS OTHERWISE NOTED
- OP74 INDICATES RECORD OR CALCULATED VALUE PER SN 2018-163 UNLESS OTHERWISE NOTED
- OP75 INDICATES RECORD OR CALCULATED VALUE PER SN 2018-163 UNLESS OTHERWISE NOTED
- OP76 INDICATES RECORD OR CALCULATED VALUE PER SN 2018-163 UNLESS OTHERWISE NOTED
- OP77 INDICATES RECORD OR CALCULATED VALUE PER SN 2018-163 UNLESS OTHERWISE NOTED
- OP78 INDICATES RECORD OR CALCULATED VALUE PER SN 2018-163 UNLESS OTHERWISE NOTED
- OP79 INDICATES RECORD OR CALCULATED VALUE PER SN 2018-163 UNLESS OTHERWISE NOTED
- OP80 INDICATES RECORD OR CALCULATED VALUE PER SN 2018-163 UNLESS OTHERWISE NOTED
- OP81 INDICATES RECORD OR CALCULATED VALUE PER SN 2018-163 UNLESS OTHERWISE NOTED
- OP82 INDICATES RECORD OR CALCULATED VALUE PER SN 2018-163 UNLESS OTHERWISE NOTED
- OP83 INDICATES RECORD OR CALCULATED VALUE PER SN 2018-163 UNLESS OTHERWISE NOTED
- OP84 INDICATES RECORD OR CALCULATED VALUE PER SN 2018-163 UNLESS OTHERWISE NOTED
- OP85 INDICATES RECORD OR CALCULATED VALUE PER SN 2018-163 UNLESS OTHERWISE NOTED
- OP86 INDICATES RECORD OR CALCULATED VALUE PER SN 2018-163 UNLESS OTHERWISE NOTED
- OP87 INDICATES RECORD OR CALCULATED VALUE PER SN 2018-163 UNLESS OTHERWISE NOTED
- OP88 INDICATES RECORD OR CALCULATED VALUE PER SN 2018-163 UNLESS OTHERWISE NOTED
- OP89 INDICATES RECORD OR CALCULATED VALUE PER SN 2018-163 UNLESS OTHERWISE NOTED
- OP90 INDICATES RECORD OR CALCULATED VALUE PER SN 2018-163 UNLESS OTHERWISE NOTED
- OP91 INDICATES RECORD OR CALCULATED VALUE PER SN 2018-163 UNLESS OTHERWISE NOTED
- OP92 INDICATES RECORD OR CALCULATED VALUE PER SN 2018-163 UNLESS OTHERWISE NOTED
- OP93 INDICATES RECORD OR CALCULATED VALUE PER SN 2018-163 UNLESS OTHERWISE NOTED
- OP94 INDICATES RECORD OR CALCULATED VALUE PER SN 2018-163 UNLESS OTHERWISE NOTED
- OP95 INDICATES RECORD OR CALCULATED VALUE PER SN 2018-163 UNLESS OTHERWISE NOTED
- OP96 INDICATES RECORD OR CALCULATED VALUE PER SN 2018-163 UNLESS OTHERWISE NOTED
- OP97 INDICATES RECORD OR CALCULATED VALUE PER SN 2018-163 UNLESS OTHERWISE NOTED
- OP98 INDICATES RECORD OR CALCULATED VALUE PER SN 2018-163 UNLESS OTHERWISE NOTED
- OP99 INDICATES RECORD OR CALCULATED VALUE PER SN 2018-163 UNLESS OTHERWISE NOTED
- OP100 INDICATES RECORD OR CALCULATED VALUE PER SN 2018-163 UNLESS OTHERWISE NOTED



### SHEET INDEX

- SHEET 1 PLAT BOUNDARY, SURVEYOR'S CERTIFICATE, LEGEND, AND SHEET INDEX
- SHEET 2 WEST HALF, LEGEND, AND NOTE
- SHEET 3 EAST HALF, LEGEND, AND NOTE
- SHEET 4 GENE. TABL., LEGEND, AND LEGEND
- SHEET 5 NARRATIVE, FENCE NOTE, DECLARATION, ACKNOWLEDGMENT PLAT NOTES, APPROVALS, AND CONSENT AFFIDAVIT



### SURVEYOR'S CERTIFICATE

I, DALE L. HULT, DO HEREBY CERTIFY THAT I HAVE CORRECTLY SURVEYED AND LAYED OUT THE PLAT HEREIN SHOWN WITH THE NECESSARY RECORDS LOCATED IN THE SW 1/4 OF SECTION 24, T25, R4E, W.M., CLACKAMAS COUNTY, OREGON, BEING MORE PARTICULARLY DESCRIBED AS FOLLOWS:

BEGINNING AT THE INITIAL POINT, THE WEST ONE-QUARTER CORNER OF TRACT B, 500'08\"/>

WAY LINE OF SE BORNSTEDT ROAD (60 FOOT WIDE RIGHT OF WAY), BEING 100'07\"/>

REGISTERED PROFESSIONAL LAND SURVEYOR  
DALE L. HULT  
RENEWED 07/01/21

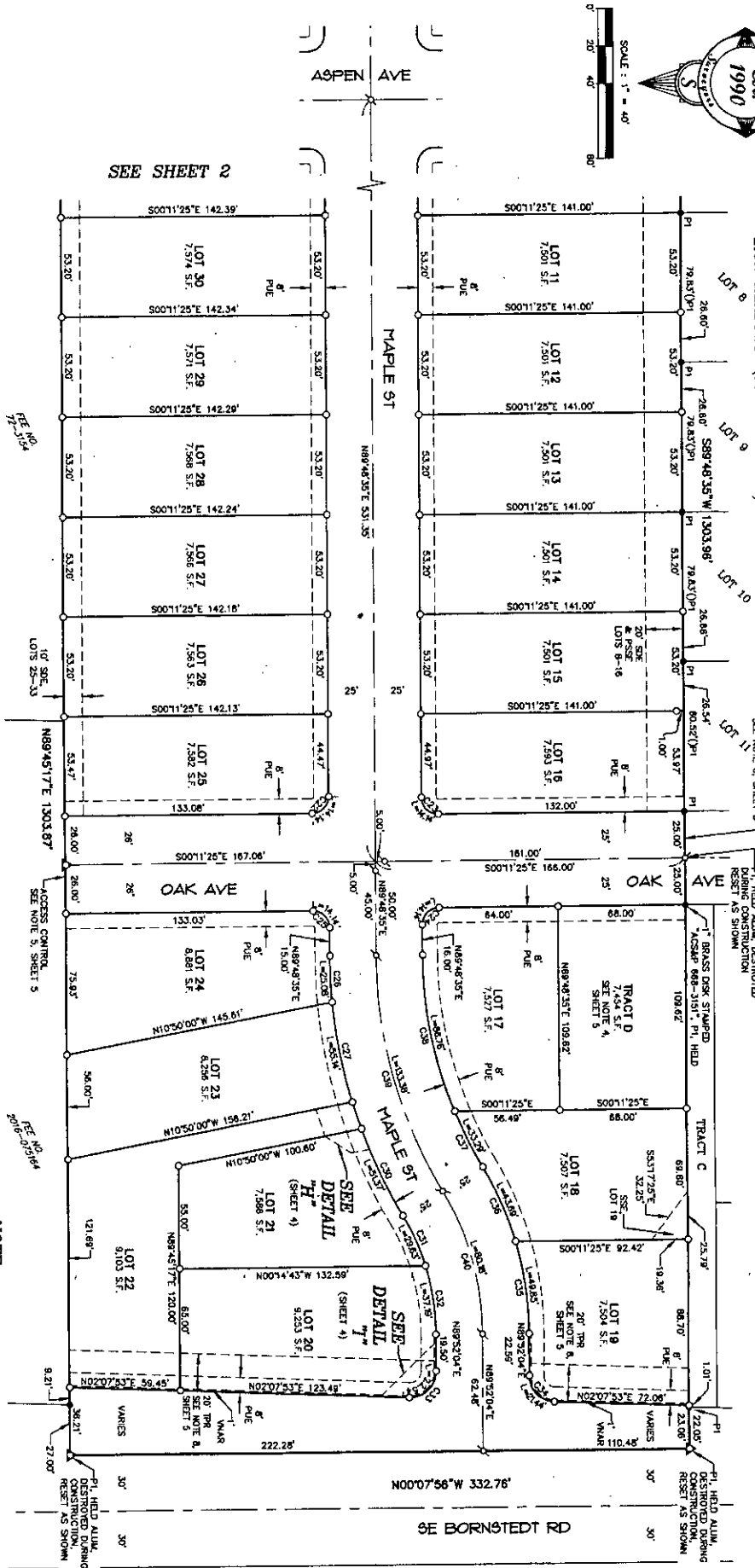
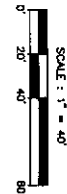
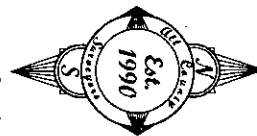
CLACKAMAS COUNTY DEVELOPMENT COMPANY  
Surveying & Planning, Inc.  
10000 NE 10th Street, Suite 100  
Sandy, Oregon 97055  
Phone: (503) 666-3151  
Fax: (503) 666-4730  
Subject to General Conditions 2006

DRAWN: DRR CHECKED: MSR APPROVED: DLH  
SHEET 1 OF 5  
DWG NUMBER: 17-028 Plat-18  
DATE OF PLOT: 11-14-18

# MARSHALL RIDGE

LOCATED IN THE SW 1/4 SEC 24, T 2S, R 4E, W.M.  
CITY OF SANDY, COUNTY OF CLATSOP, OREGON  
DECEMBER 7, 2018

BOOK 151 PAGE 014



### LEGEND

- FOUND MONUMENT AS NOTED HEREON
  - SET 5/8" BY 30" IR W/PC MARKED "ACSP" 503-688-3151 SET ON 10-02-19
  - SET 5/8" BY 30" IR W/PC MARKED "ACSP" 503-688-3151 IN MONUMENT BOX SET ON 10-02-19
  - SET 5/8" BY 30" IR W/ALUMINUM CAP MARKED "ACSP" 503-688-3151 SET ON 10-02-19
  - SET 1" BRASS DISC STAMPED "ACSP" 688-3151 SET ON 10-02-19
  - △ FOUND MONUMENT
  - × FOUND MONUMENT WITH YELLOW PLASTIC CAP
  - W/PC MARKED ROUN ROOD
  - IR MARKED ROUN PIPE INSIDE DIAMETER
  - ALUM MARKED ALUMINUM CAP MARKED
- 
- (P1) INDICATES RECORD OR CALCULATED VALUE PER PLAT NO. 4483 "ZION MEADOWS", CLATSOP COUNTY PLAT RECORDS MONUMENT IS A 5/8" IR W/PC MARKED "ACSP" 503-688-3151, HELD, UNLESS OTHERWISE NOTED
  - (R1) INDICATES RECORD OR CALCULATED VALUE PER SN 2018-07 MONUMENT IS A 5/8" IR W/PC MARKED "ACSP" 503-688-3151, UNLESS OTHERWISE NOTED
  - (R2) INDICATES RECORD OR CALCULATED VALUE PER SN 1164 MONUMENT IS A 5/8" IR NO CAP UNLESS OTHERWISE NOTED
  - (R3) INDICATES RECORD OR CALCULATED VALUE PER SN 20018-153
  - (R4) INDICATES RECORD OR CALCULATED VALUE PER SN 151533
  - (R5) INDICATES RECORD OR CALCULATED VALUE PER SN 20018-153
  - (R6) INDICATES RECORD OR CALCULATED VALUE PER SN 151533
  - (R7) INDICATES RECORD OR CALCULATED VALUE PER SN 20018-153
  - (R8) INDICATES RECORD OR CALCULATED VALUE PER SN 151533
  - (R9) INDICATES RECORD OR CALCULATED VALUE PER SN 20018-153
  - (R10) INDICATES RECORD OR CALCULATED VALUE PER SN 151533
  - (R11) INDICATES RECORD OR CALCULATED VALUE PER SN 20018-153
  - (R12) INDICATES RECORD OR CALCULATED VALUE PER SN 151533
  - (R13) INDICATES RECORD OR CALCULATED VALUE PER SN 20018-153
  - (R14) INDICATES RECORD OR CALCULATED VALUE PER SN 151533
  - (R15) INDICATES RECORD OR CALCULATED VALUE PER SN 20018-153
  - (R16) INDICATES RECORD OR CALCULATED VALUE PER SN 151533
  - (R17) INDICATES RECORD OR CALCULATED VALUE PER SN 20018-153
  - (R18) INDICATES RECORD OR CALCULATED VALUE PER SN 151533
  - (R19) INDICATES RECORD OR CALCULATED VALUE PER SN 20018-153
  - (R20) INDICATES RECORD OR CALCULATED VALUE PER SN 151533
  - (R21) INDICATES RECORD OR CALCULATED VALUE PER SN 20018-153
  - (R22) INDICATES RECORD OR CALCULATED VALUE PER SN 151533
  - (R23) INDICATES RECORD OR CALCULATED VALUE PER SN 20018-153
  - (R24) INDICATES RECORD OR CALCULATED VALUE PER SN 151533
  - (R25) INDICATES RECORD OR CALCULATED VALUE PER SN 20018-153
  - (R26) INDICATES RECORD OR CALCULATED VALUE PER SN 151533
  - (R27) INDICATES RECORD OR CALCULATED VALUE PER SN 20018-153
  - (R28) INDICATES RECORD OR CALCULATED VALUE PER SN 151533
  - (R29) INDICATES RECORD OR CALCULATED VALUE PER SN 20018-153
  - (R30) INDICATES RECORD OR CALCULATED VALUE PER SN 151533

### NOTE

SEE CURVE TABLE ON SHEET 4

REGISTERED PROFESSIONAL LAND SURVEYOR  
 JAMES T. HULL  
 DATE 07/01/21  
 RENEWS 07/01/21

CLIENT: STAFFORD LAND COMPANY

Surveyors & Planners, Inc.  
 Scientific, Precise and Civil Engineering  
 10. Box 855 Sandy, OR 97055  
 Phone: (503) 668-4700  
 Fax: (503) 668-4151  
 (Subject to General Conditions 2008)

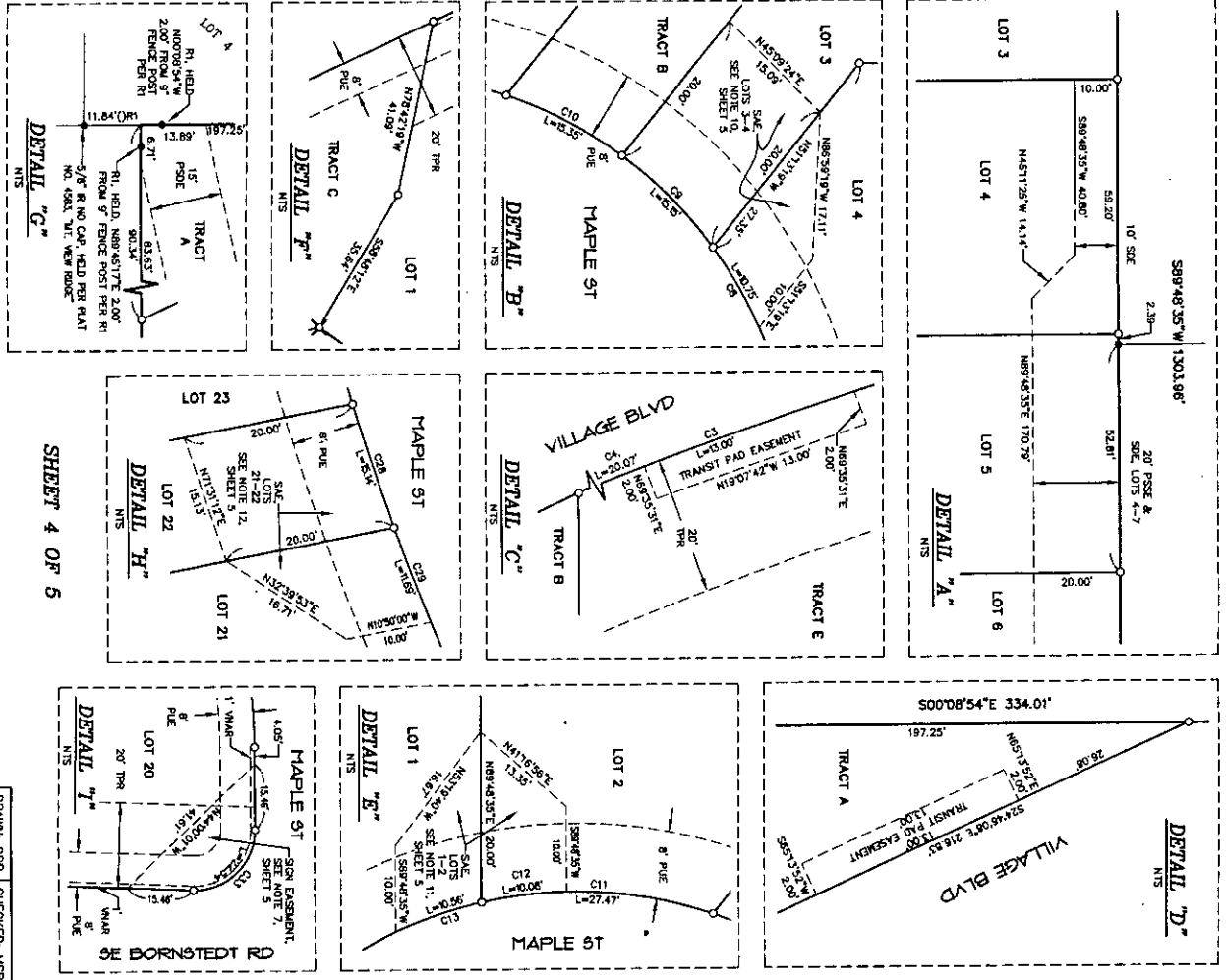
DRAWN: DRR CHECKED: MSR APPROVED: DLH

SHEET 3 OF 5  
 DMC NUMBER: 17-025 Ptd-08  
 DATE OF PLAT: 11-14-19

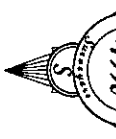
# MARSHALL RIDGE

LOCATED IN THE SW 1/4 SEC 24, T. 2S, R. 4E, WM.  
CITY OF SANDY, COUNTY OF CLATSOP, OREGON  
DECEMBER 7, 2018

CURVE	LENGTH	RADIUS	DELTA	CHORD
C1	128.18'	300.00'	24.2858°	S12.31.38"E 127.22'
C2	115.32'	270.00'	24.2818°	S12.31.56"E 114.45'
C3	13.00'	270.00'	2.4535°	S19.07.42"E 13.00'
C4	20.07'	270.00'	4.1935°	S22.3817"E 20.07'
C5	35.32'	70.00'	28.5421°	S75.4414"E 34.94'
C6	16.82'	50.00'	19.0228°	N70.4818"W 16.54'
C7	40.00'	50.00'	45.5012°	S76.4522"W 38.94'
C8	10.75'	50.00'	12.1858°	S59.5945"W 10.73'
C9	15.15'	50.00'	17.2144°	S45.0924"W 15.09'
C10	15.35'	50.00'	17.3506°	S27.4100"W 15.29'
C11	27.47'	50.00'	31.2859°	S03.0857"W 27.13'
C12	10.08'	50.00'	11.3321°	S08.4852"E 10.07'
C13	10.56'	50.00'	12.0610°	S18.3837"E 10.54'
C14	33.06'	50.00'	37.5309°	S31.3207"E 32.46'
C15	40.28'	50.00'	46.0908°	S73.3315"E 39.29'
C16	46.78'	50.00'	53.3625°	S56.3358"W 45.09'
C17	20.98'	20.00'	60.0249°	S39.4710"W 20.01'
C18	14.14'	9.00'	90.0000°	N45.1125"W 12.73'
C19	14.14'	9.00'	90.0000°	N44.4835"E 12.73'
C20	14.14'	9.00'	90.0000°	S45.1125"E 12.73'
C21	14.14'	9.00'	90.0000°	S44.4835"W 12.73'
C22	14.14'	9.00'	90.0000°	N45.1125"W 12.73'
C23	14.14'	9.00'	90.0000°	N44.4835"E 12.73'
C24	14.14'	9.00'	90.0000°	S45.1125"E 12.73'
C25	14.14'	9.00'	90.0000°	S44.4835"W 12.73'
C26	25.08'	275.00'	5.1328°	N87.1151"E 25.07'
C27	55.14'	275.00'	11.2918°	N78.5028"E 55.05'
C28	15.14'	275.00'	3.0913°	N71.3112"E 15.13'
C29	11.69'	275.00'	2.2612°	N68.4330"E 11.69'
C30	51.37'	275.00'	10.4209°	N64.3531"E 51.29'
C31	29.63'	125.00'	13.3446°	S86.0150"W 29.56'
C32	37.18'	125.00'	17.0251°	S81.2039"W 37.05'
C33	22.54'	14.00'	92.549°	N44.0001"W 20.19'
C34	21.44'	14.00'	87.4411°	N45.9859"E 19.40'
C35	49.85'	175.00'	16.1921°	S81.4223"W 49.69'
C36	43.69'	175.00'	14.1816°	S56.2335"W 43.58'
C37	33.29'	225.00'	8.2837°	N63.2845"E 33.26'
C38	86.76'	225.00'	22.0532°	N78.4549"E 86.22'
C39	133.36'	250.00'	30.3408°	N74.3131"E 131.81'
C40	80.18'	150.00'	30.3737°	S74.3315"W 79.23'



DRAWN: DRR CHECKED: WSR APPROVED: DLH



- LEGEND**
- FOUND MONUMENT AS NOTED HEREON
  - SET 5/8" BY 30" R/W/PC MARKED \*ACSP
  - 503-668-3151 SET ON 10-02-19
  - SET 5/8" BY 30" R/W/PC MARKED \*ACSP
  - 503-668-3151 IN MONUMENT BOX SET ON 10-02-19
  - SET 5/8" BY 30" R/W/PC MARKED \*ACSP
  - 503-668-3151, SET ON 10-02-19
  - SET 1" BRASS DISC STRAPPED \*ACSP 668-3151, SET ON 10-02-19
  - FOUND MONUMENT
  - INDICATES WITH YELLOW PLASTIC CAP
  - INDICATES IRON ROD
  - INDICATES IRON PIPE, INSIDE DIAMETER
  - ALUM INDICATES ALUMINUM CAP MARKED
  - ○1 INDICATES RECORD OR CALCULATED VALUE PER PLAT NO. 4443 "ZON REZONING", CLATSOP COUNTY PLAT RECORDS, MONUMENT IS A 5/8" R/W/PC MARKED \*ACSP 503-668-3151, BEID, UNLESS OTHERWISE NOTED
  - ○2 INDICATES RECORD OR CALCULATED VALUE PER SN 2018-037, MONUMENT IS A 5/8" R/W/PC MARKED \*ACSP 503-668-3151, UNLESS OTHERWISE NOTED
  - ○3 INDICATES RECORD OR CALCULATED VALUE PER SN 2018-143
  - ○4 INDICATES RECORD OR CALCULATED VALUE PER SN1533
  - ○5 INDICATES SURVEY NUMBER, CLATSOP COUNTY PLAT RECORDS
  - ○6 INDICATES PRIVATE STORM DRAINAGE EASEMENT, BEHINDING LOTS AS NOTED HEREON
  - ○7 INDICATES PRIVATE SANITARY SEWER EASEMENT, BEHINDING LOTS AS NOTED HEREON
  - ○8 PUBLIC UTILITY EASEMENT
  - ○9 VEHICULAR NON-ACCESS RESTRICTION, GRANTED TO CITY OF SANDY JURISDICTION
  - ○10 INDICATES PUBLIC STORM DRAIN EASEMENT
  - ○11 INDICATES PUBLIC SANITARY SEWER EASEMENT
  - ○12 TREE PRESERVATION RESTRICTION, SEE NOTE B, SHEET 5
  - ○13 INDICATES SHARED ACCESS EASEMENT, BEHINDING LOTS AS NOTED HEREON
  - ○14 INDICATES DESTROYED NOT REPLACED

CLIENT: STAFFORD LAND COMPANY

REVISIONS: 07/01/21

REGISTERED PROFESSIONAL LAND SURVEYOR  
OREGON  
JANUARY 23, 1990  
DALE L. HULT  
2422

Surveyors & Planners, Inc.  
Sandy, Oregon  
P.O. Box 855 Sandy, OR 97055  
Phone: (503) 684-2731  
Fax: (503) 684-2731  
Subject to General Conditions 2008 S

DWG NUMBER: 17-025 Fielding  
DATE OF PLOT: 11-14-19

# MARSHALL RIDGE

LOCATED IN THE SW 1/4 SEC 24, T 2S, R 4E, W1M,  
CITY OF SANDY, COUNTY OF CLACKAMAS, OREGON  
DECEMBER 7, 2018

BOOK 151 PAGE 014

### NARRATIVE

THE PURPOSE OF THIS PLAT IS TO SUBDIVIDE THE SUBJECT TRACT AS RECORDED IN DEED DOC. NO. 2008-04436, CLACKAMAS COUNTY DEED RECORDS. THE BOUNDARY RESOLUTION IS PER SB2018-027, CHAPTER 2018-027, OREGON STATUTES. THE SUBJECT TRACT IS ALONG THE NORTH LINE PER RI AS SHOWN.

### PLAT NOTES

1. THIS PLAT IS SUBJECT TO CONDITIONS OF APPROVAL AS STATED IN THE CITY OF SANDY PLANNING FILE NO. 17-066 SUB/VAR.
2. A TREE PRESERVATION RESTRICTION SHALL BE ACROSS THE ENTIRETY OF TRACTS A AND E GRANTED TO THE CITY OF SANDY, OREGON. THE RESTRICTION SHALL BE THE MARSHALL RIDGE HOME OWNERS ASSOCIATION, CLACKAMAS COUNTY DEED RECORDS, 2018, 0155221.
3. TRACT 9 IS A PUBLIC STREETWAY ACCESS TRACT CONNECTED TO THE CITY OF SANDY RECORDS IN BOOK 17 AND 2018, 0155221. CLACKAMAS COUNTY DEED RECORDS AND IS SUBJECT TO A PUBLIC STREETWAY EASEMENT.
4. TRACTS C AND D ARE CONNECTED TO THE CITY OF SANDY RECORDS IN DOCUMENT NO. 2019-0155221. CLACKAMAS COUNTY DEED RECORDS, FOR PUBLIC STREET WATER DETENTION SYSTEMS TO BE OWNED AND MAINTAINED BY THE CITY OF SANDY.
5. ACCESS FROM ADJACENT PROPERTIES SHALL BE CONTROLLED BY THE CITY OF SANDY BY THE RECORDING OF THIS PLAT. THIS PLAT IS SUBJECT TO THE CITY OF SANDY'S ACCEPTANCE OF PUBLIC RIGHT-OF-WAY DEDICATION OR THE RECORDING OF A PLAT EXTENDING THE RIGHT-OF-WAY ONTO ADJACENT PROPERTY.
6. THE ACCESS CONTROL RESTRICTION GRANTED TO THE CITY OF SANDY PER NOTE 13, SHEET 4 OF "ZION HEDGECOCK" WILL AUTOMATICALLY TERMINATE ALONG OAK AVENUE, ASPEN AVENUE, AND SANDY AVENUE. THE CITY OF SANDY WILL BE RESPONSIBLE FOR THE RIGHT-OF-WAY AND RECORDING OF THIS PLAT.
7. LOT 20 CONTAINS A SIGN EASEMENT, BENEFITING THE MARSHALL RIDGE HOME OWNERS ASSOCIATION.
8. LOTS 1-3, 6, 9, 11, 12, 14-16, 18, 20, 22 AND 23 ARE SUBJECT TO A RESTRICTIVE COVENANT FOR TREE PROTECTION 2018, 0155221. CLACKAMAS COUNTY DEED RECORDS.
9. THIS PLAT IS SUBJECT TO DECLARATION OF COVENANTS, CONDITIONS, AND RESTRICTIONS PER DOCUMENT OR COVENANTS, CONDITIONS, AND RESTRICTIONS PER DOCUMENT NO. 2018, 0155221. CLACKAMAS COUNTY DEED RECORDS.
10. A PRIVATE DRIVEWAY MAINTENANCE AGREEMENT FOR COMMON ACCESS FOR LOTS 3 AND 4 IS RECORDED UNDER FEE NO. 2018, 0155221. CLACKAMAS COUNTY DEED RECORDS.
11. A PRIVATE DRIVEWAY MAINTENANCE AGREEMENT FOR COMMON ACCESS FOR LOTS 1 AND 2 IS RECORDED UNDER FEE NO. 2018, 0155221. CLACKAMAS COUNTY DEED RECORDS.
12. A PRIVATE DRIVEWAY MAINTENANCE AGREEMENT FOR COMMON ACCESS FOR LOTS 21 AND 22 IS RECORDED UNDER FEE NO. 2018, 0155221. CLACKAMAS COUNTY DEED RECORDS.

**FENCE NOTE**  
FENCES ARE EITHER ON THE PROPERTY LINE OR NON-EXISTENT AT THE TIME OF THIS PLAT.

### DECLARATION

I KNOW ALL MEN BY THESE PRESENTS THAT STARBUCK DEVELOPMENT COMPANY, LLC IS THE OWNER OF THE LAND DESCRIBED IN THE ACCOMPANYING SURVEYOR'S CERTIFICATE AND HAS CAUSED THE SUBDIVISION TO BE PREPARED AND THE PROPERTY DIVIDED IN ACCORDANCE WITH ORES TO THE PUBLIC FOREVER ALL RIGHT-OF-WAYS DEDICATED FOR PUBLIC STREET PURPOSES AND HEREBY GRANTING RESTRICTIONS AND PUBLIC AND PRIVATE RIGHTS WHERE THE PROPERTY IS SUBJECT TO WATER EASEMENTS AND RESTRICTIONS SHOWN AS NOTED IN THE PLAT NOTES HEREON.

*Sandy Collier*  
GORDON ROOT - MANAGER

### ACKNOWLEDGMENT

STATE OF OREGON SS  
COUNTY OF CLACKAMAS  
I, KNOW ALL MEN BY THESE PRESENTS THAT ON November 16 2019, I, Tracy M. Halden, a duly qualified and duly sworn State Personally Appeared Gordon Root as Manager of STARBUCK DEVELOPMENT COMPANY, LLC, WHO BEING FIRST DULY EXAMINED AND FOUND TO BE A SOLELY OWNED AND CONTROLLED BY FOREIGN AND NATURAL PERSONS AND THAT SAID INSTRUMENT WAS EXECUTED FREELY AND VOLUNTARILY.  
*Tracy M. Halden*  
NOTARY PUBLIC - OREGON 988-2279  
MY COMMISSION EXPIRES: March 1, 2023

### CONSENT AFFIDAVIT

A SUBDIVISION PLAT CONSIST OF PLAT FROM COMMUNITY FINANCIAL CORPORATION, AN OREGON CORPORATION, A TRUST DEED BENEFICIARY PER DOCUMENT NO. 2018-045571, HAS BEEN EXECUTED AND RECORDED IN CLACKAMAS COUNTY DEED RECORDS, NO. 2018-045571.  
A SUBDIVISION PLAT CONSIST OF PLAT FROM BILLY EARLY DYNASTY, INC. AN OREGON CORPORATION, A TRUST DEED BENEFICIARY PER DOCUMENT NO. 2018-045572, HAS BEEN EXECUTED AND RECORDED AS DOCUMENT NO. 2018-015531. CLACKAMAS COUNTY DEED RECORDS.

### APPROVALS

CITY OF SANDY  
CITY OF SANDY FILE NO. 17-066 SUB/VAR  
APPROVED THIS 21st DAY OF November 2019  
BY: *[Signature]*  
CITY OF SANDY PLANNING DIRECTOR

APPROVED THIS 22nd DAY OF November 2019  
BY: *[Signature]*  
CITY OF SANDY ENGINEER  
CHRISTIAN WOOD, INC.

CLACKAMAS COUNTY  
APPROVED THIS 22nd DAY OF November 2019  
BY: *[Signature]*  
CLACKAMAS COUNTY SURVEYOR  
AND CLACKAMAS COUNTY BOARD OF COMMISSIONERS  
DELEGATE PER COUNTY CODE 11.02

ALL TAXES, FEES, ASSESSMENTS OR OTHER CHARGES AS PROVIDED BY O.R.S. 12.050 HAVE BEEN PAID THROUGH  
JUNE 30 2020  
APPROVED THIS 26 DAY OF November 2019  
BY: *[Signature]*  
CLACKAMAS COUNTY ASSESSOR & TAX COLLECTOR  
DEPUTY

STATE OF OREGON SS  
COUNTY OF CLACKAMAS  
I, DO HEREBY CERTIFY THAT THE ATTACHED PLAT WAS RECEIVED FOR RECORD AND RECORDED ON THE  
26th DAY OF November 2019  
AT 3:28 O'CLOCK P.M.  
AS PLAT NUMBER Head  
DOCUMENT NO. 2019-076519  
SHERYL HALL, CLACKAMAS COUNTY CLERK  
BY: *[Signature]*  
DEPUTY

REGISTERED  
PROFESSIONAL  
LAND SURVEYOR  
OR OREGON 1990  
JAMES L. HULL  
2457  
RENEWED 07/01/21

CLIENT: STARBUCK LAND COMPANY  
SHEET 5 OF 5  
Sandy Collier  
Starbuck  
Surveyors & Planners, Inc.  
Surveying, Planning  
& Engineering  
10, Box 855 Sandy, OR 97055  
Phone: (503) 668-4750  
Fax: (503) 668-4750  
Subject to General Conditions 2008 C

DRAWN: DRR CHECKED: MSR APPROVED: DJH

DWG NUMBER: 17-025-Prickling DATE: 11-15-19

CLACKAMAS COUNTY RECORDING

Receipt #: 777941

Receipt Date: 11/26/2019 03:41 PM

Station: 54

Cashier: CINDY

Receipt Name: FIRST AMERICAN - MARSHALL RIDGE

Comments:

RECORDING

Document #	Recording Date	Doc Type	Recording	A&T Fee	PLC Fee	NonStd	Surveyor	OLCC	Housing	Other	Total
2019-075517	11/26/2019 03:28:59 PM	PD-AFCON	5.00	16.00	10.00				62.00		\$93.00
2019-075518	11/26/2019 03:28:59 PM	PD-AFCON	5.00	16.00	10.00				62.00		\$93.00
2019-075519	11/26/2019 03:28:59 PM	PD-SUB	45.00	16.00	10.00				62.00		\$133.00
2019-075520	11/26/2019 03:28:59 PM	D-D	10.00	16.00	10.00				62.00		\$98.00
2019-075521	11/26/2019 03:28:59 PM	D-D	20.00	16.00	10.00	20.00			62.00		\$128.00
2019-075522	11/26/2019 03:28:59 PM	PD-COV	150.00	16.00	10.00				62.00		\$238.00
2019-075522 (2)	11/26/2019 03:28:59 PM	PD-RES									
2019-075523	11/26/2019 03:28:59 PM	PD-COV	65.00	16.00	10.00				62.00		\$153.00
2019-075524	11/26/2019 03:28:59 PM	D-MA	15.00	16.00	10.00				62.00		\$103.00
2019-075525	11/26/2019 03:28:59 PM	D-MA	15.00	16.00	10.00				62.00		\$103.00
2019-075526	11/26/2019 03:28:59 PM	D-D	15.00	16.00	10.00				62.00		\$103.00
<b>Totals:</b>			<b>\$345.00</b>	<b>\$160.00</b>	<b>\$100.00</b>	<b>\$20.00</b>	<b>\$0.00</b>	<b>\$0.00</b>	<b>\$620.00</b>	<b>\$0.00</b>	<b>\$1,245.00</b>

Thank You  
Retain this receipt for your records

Receipt Total **\$1,245.00**  
CHECK \$1,245.00