

COMMUNITY DEVELOPMENT DIRECTOR

APPROVED BY [Signature] 3/26/18 DATE

CITY ENGINEER

APPROVED BY [Signature] 3/27/18 DATE

CITY OF BATTLE GROUND MAYOR

APPROVED BY [Signature] 3/26/18 DATE

COUNTY AUDITOR

ATTESTED BY [Signature] COUNTY AUDITOR

FILED FOR RECORD THIS 27th DAY OF March, 2018.

AUDITORS FILE NO. 5498451 BOOK 311, PAGE 949.

COUNTY ASSESSOR

THIS PLAT MEETS THE REQUIREMENTS OF R.C.W. NO. 58.17.170, LAWS OF WASHINGTON, 1981, TO BE KNOWN AS

LONE OAK ESTATES III PHASE 2

SUBDIVISION PLAT NO. _____ IN THE COUNTY OF CLARK, STATE OF WASHINGTON

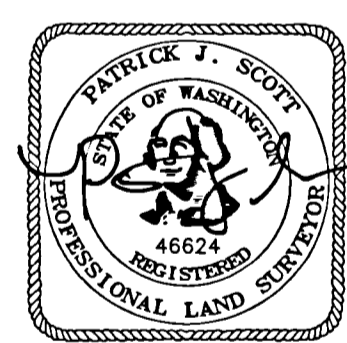
[Signature] For Peter Van Nortrick 03/27/2018 COUNTY ASSESSOR DATE

LAND SURVEYOR'S CERTIFICATION

ON THE BASIS OF MY KNOWLEDGE, INFORMATION AND BELIEF, I CERTIFY TO CLARK COUNTY THAT AS A RESULT OF A SURVEY MADE ON THE GROUND TO THE NORMAL STANDARD OF CARE OF PROFESSIONAL LAND SURVEYORS PRACTICING IN CLARK COUNTY, I FIND THAT THIS PLAT, AS SHOWN, IS A TRUE RETURN FROM THE FIELD AND THAT THE DELINEATION IS CORRECT.

[Signature] 3-8-2018 DATE

PATRICK J. SCOTT PROFESSIONAL LAND SURVEYOR NO. 46624



3-8-2018

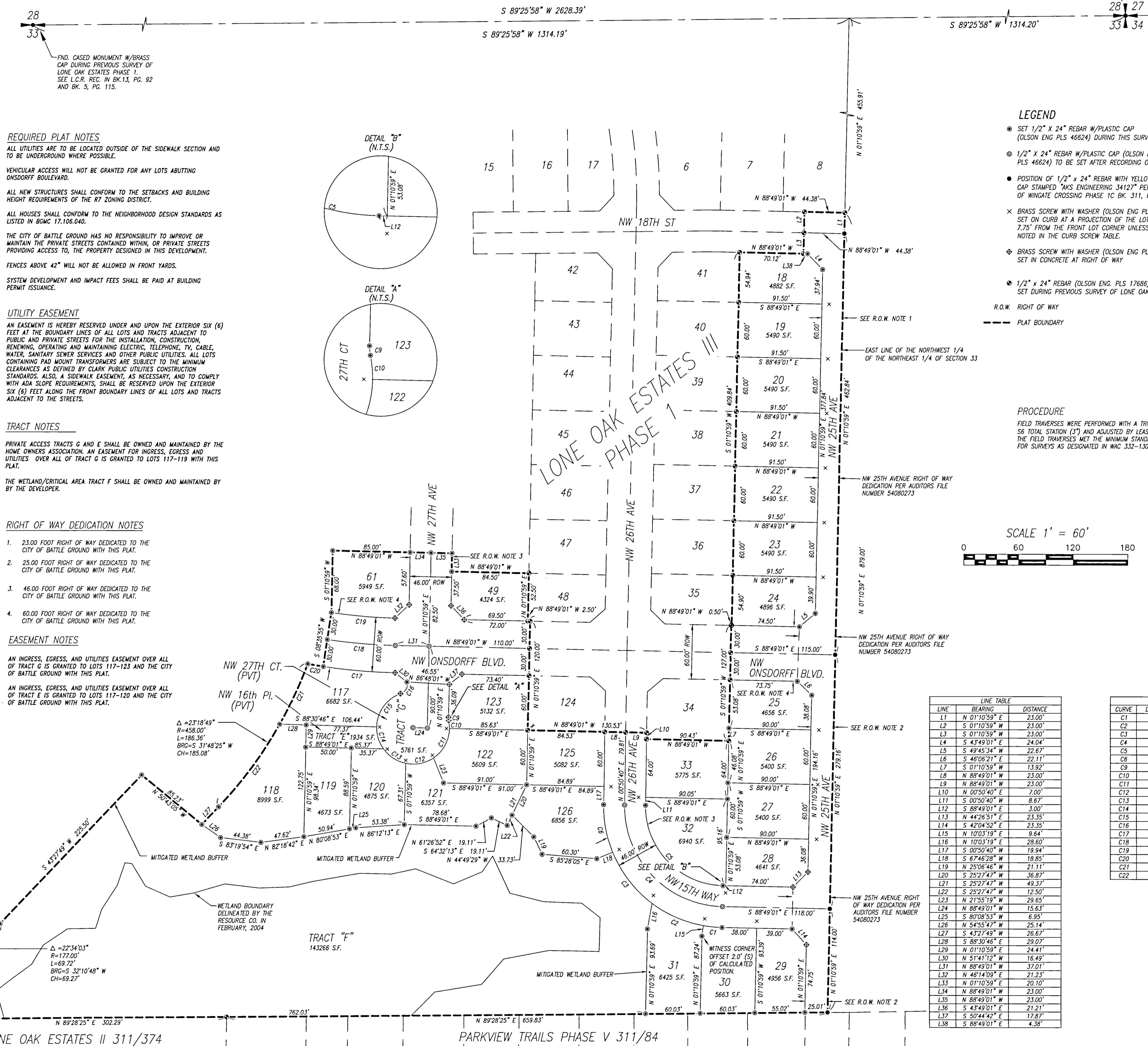
DEED REFERENCES

GRANTOR: WALDAL, ART B. WALDAL, CAROL A. MENGER, KENNETH R. MENGER, LOIS A. MENGER, LOIS A. MENGER, KENNETH R. MENGER, LOIS A. MENGER, LOIS A. MENGER, LOIS A. DATE: 10-13-2015

SURVEY REFERENCES

LONE OAK ESTATES PHASE 1 BK. 310, PG. 967 EV HILL AND ASSOCIATES BK. 14, PG. 139 LONE OAK ESTATES PHASE II BK. 311, PG. 374

LONE OAK ESTATES III PHASE 2



FIND CASED MONUMENT W/BRASS CAP DURING PREVIOUS SURVEY OF LONE OAK ESTATES PHASE 1. SEE L.C.R. REC. IN BK. 5, PG. 93

A SUBDIVISION IN THE NW 1/4 OF THE NE 1/4 OF SEC. 33, T4N, R2E, W.M., CITY OF BATTLE GROUND, WASHINGTON MARCH 2018

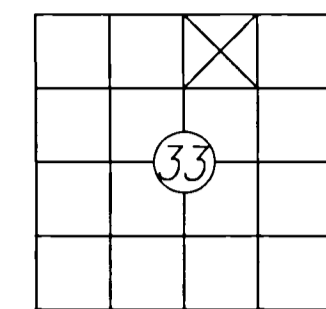


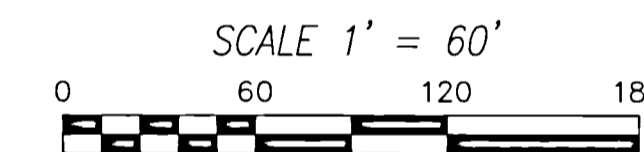
Table with 3 columns: CURB SCREW TABLE, LOT LINE, DISTANCE. Rows include 25/26, 26/27, 27/28, 117/TRACT E, TRACT E/120, 120/121, 121/122, 122/123.

LEGEND

- SET 1/2" X 24" REBAR W/PLASTIC CAP (OLSON ENG PLS 46624) DURING THIS SURVEY
1/2" X 24" REBAR W/PLASTIC CAP (OLSON ENG PLS 46624) TO BE SET AFTER RECORDING OF PLAT
POSITION OF 1/2" X 24" REBAR WITH YELLOW PLASTIC CAP STAMPED "AKS ENGINEERING 34122" PER THE PLAN OF WINGATE CROSSING PHASE 1C BK. 311, PG. 936
BRASS SCREW WITH WASHER (OLSON ENG PLS 46624) SET ON CURB AT A PROJECTION OF THE LOT LINE 7.75' FROM THE FRONT LOT CORNER UNLESS OTHERWISE NOTED IN THE CURB SCREW TABLE.
BRASS SCREW WITH WASHER (OLSON ENG PLS 46624) SET IN CONCRETE AT RIGHT OF WAY
1/2" X 24" REBAR (OLSON ENG. PLS 17686) SET DURING PREVIOUS SURVEY OF LONE OAK ESTATES
R.O.W. RIGHT OF WAY
PLAT BOUNDARY

PROCEDURE

FIELD TRAVERSES WERE PERFORMED WITH A TRIMBLE S6 TOTAL STATION (3") AND ADJUSTED BY LEAST SQUARES. THE FIELD TRAVERSES MET THE MINIMUM STANDARDS FOR SURVEYS AS DESIGNATED IN WAC 332-130-090.



BASIS OF BEARINGS

BEARINGS ARE ASSUMED BASED ON N 89°25'58" E CORNER AND THE NE CORNER OF SECTION 33.

LINE TABLE with columns: LINE, BEARING, DISTANCE. Rows L1 through L38.

CURVE TABLE with columns: CURVE, DELTA ANGLE, RADIUS, ARC LENGTH, CHORD BEARING, CHORD LENGTH. Rows C1 through C22.

JOB# 7598.33.01
COPYRIGHT 2017, OLSON ENGINEERING, INC.
FILE: J:\data\7000\7500\7590\7598\7598.33.01\7598.spl2pl.dwg
OLSON LAND SURVEYORS ENGINEERS
222 E. EVERGREEN BLVD, VANCOUVER, WA 98660