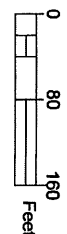


**SHEET INDEX**  
 SHEET 1 - PLAT BOUNDARY, LEGEND  
 SHEET 2 - WEST HALF, LEGEND, CURVE TABLE AND DETAILS  
 SHEET 3 - EAST HALF, LEGEND, CURVE TABLE AND DETAILS  
 SHEET 4 - SURVEYOR'S CERTIFICATE, APPROVAL, DECLARATION, AFFIDAVIT OF PRACTICE, INDEPENDENT THIRD PARTY NOTES, PLAT NOTES AND COMMENTS

**LEGEND**

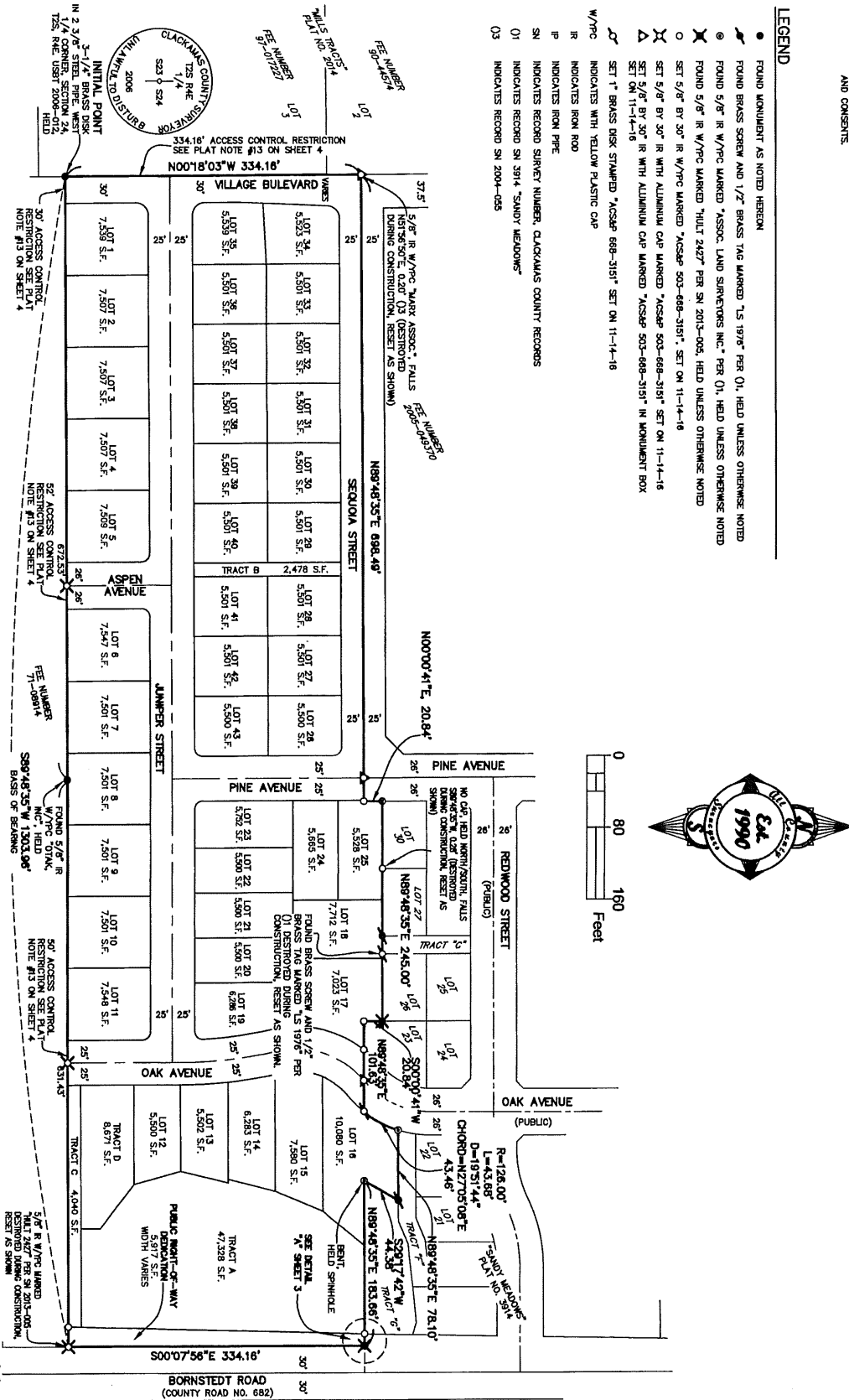
- FOUND MONUMENT AS NOTED HEREON
- FOUND BRASS SCREW AND 1/2" BRASS TAG MARKED "S 1976" PER (1), HEAD UNLESS OTHERWISE NOTED
- ⊗ FOUND 5/8" IR W/P/C MARKED "ASSOC. LAND SURVEYORS INC." PER (1), HEAD UNLESS OTHERWISE NOTED
- ⊗ FOUND 5/8" IR W/P/C MARKED "HULT 2427" PER SN 2013-005, HED UNLESS OTHERWISE NOTED
- SET 5/8" BY 30" IR W/P/C MARKED "ACSP# 503-688-3151", SET ON 11-14-16
- ⊗ SET 5/8" BY 30" IR WITH ALUMINUM CAP MARKED "ACSP# 503-688-3151" SET ON 11-14-16
- △ SET 5/8" BY 30" IR WITH ALUMINUM CAP MARKED "ACSP# 503-688-3151" IN MONUMENT BOX SET ON 11-14-16
- ⊗ SET 1" BRASS DISK STAMPED "ACSP# 688-3151" SET ON 11-14-16
- W/P/C INDICATES WITH YELLOW PLASTIC CAP
- IR INDICATES IRON ROD
- IP INDICATES IRON PIPE
- SN INDICATES RECORD SURVEY NUMBER, CLACKAMAS COUNTY RECORDS
- O1 INDICATES RECORD SN 3914 "SANDY MEADOWS"
- O3 INDICATES RECORD SN 2004-055



**ZION MEADOWS**  
 A REPLAT OF TRACTS D AND E, SANDY MEADOWS PLAT NO. 3614, TOGETHER WITH OTHER LANDS SITUATE IN THE NW 1/4 OF SECTION 24, T2S, R4E, W4E, CITY OF SANDY, CLACKAMAS COUNTY, OREGON

SCALE 1" = 80'  
 JULY 11, 2016

BOOK 147 PAGE 1  
 PLAT NO. 4483



**Surveyors & Planners**  
 Stronach, Blum  
 and Hill-Engel  
 P.O. Box 955 Sandy, OR  
 Phone: (503) 668-  
 Fax: (503) 668-  
 Subjected to  
 DMC NUMBER 14-26  
 SHEET 1 OF 4  
 CLIENT: \_\_\_\_\_

REGIS  
 PROFS  
 LAND SUR  
 DATE 24  
 RENEWS (

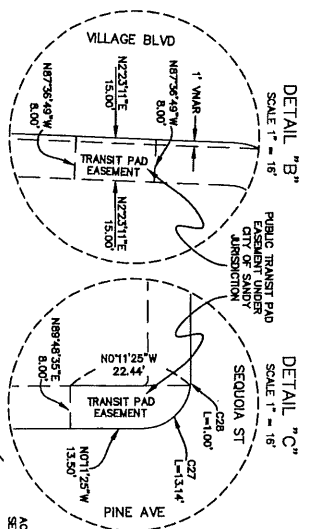
**LEGEND**

- FOUND MONUMENT AS NOTED HEREON
- FOUND BRASS SCREW AND 1/2" BRASS TAG MARKED "S 1976" PER 01, HELD UNLESS OTHERWISE NOTED
- ⊗ FOUND 5/8" IR W/PFC MARKED "ASSOC. LAND SURVEYORS INC." PER 01, HELD UNLESS OTHERWISE NOTED
- ⊙ FOUND 5/8" IR W/PFC MARKED "HALT 2627" PER SN 2003-005, HELD UNLESS OTHERWISE NOTED
- SET 5/8" BY 30" IR W/PFC MARKED "ACSP# 503-668-3191", SET ON 11-14-16
- SET 5/8" BY 30" IR WITH ALUMINUM CAP MARKED "ACSP# 503-668-3191" SET ON 11-14-16
- SET 5/8" BY 30" IR WITH ALUMINUM CAP MARKED "ACSP# 503-668-3191" IN MONUMENT BOX, SET ON 11-14-16
- SET 1" BRASS DISK STAMPED "ACSP# 668-3191" SET ON 11-14-16
- IR INDICATES WITH YELLOW PLASTIC CAP
- IR INDICATES IRON PIPE
- IR INDICATES IRON ROD
- SN INDICATES RECORD SURVEY NUMBER, CLACKAMAS COUNTY RECORDS
- 01 INDICATES RECORD SN 3914 "SANDY MEADOWS"
- 03 INDICATES RECORD SN 2004-055
- 04 INDICATES PUBLIC SANITARY SEWER EASEMENT, GRANTED TO CITY OF SANDY JURISDICTION
- 05 INDICATES PUBLIC UTILITY EASEMENT
- PUE INDICATES VEHICULAR NON-ACCESS RESTRICTION, GRANTED TO CITY OF SANDY JURISDICTION
- VMAK INDICATES PRIVATE STORM DRAINAGE EASEMENT, BENEFITING LOTS AS NOTED HEREON
- PSE INDICATES PRIVATE SEWER EASEMENT, BENEFITING LOTS AS NOTED HEREON
- PFE INDICATES PRIVATE GRADING AND REPAIR EASEMENT FOR PRIVATE RETAINING WALL
- PBE INDICATES PRIVATE GRADING AND REPAIR EASEMENT FOR PRIVATE RETAINING WALL

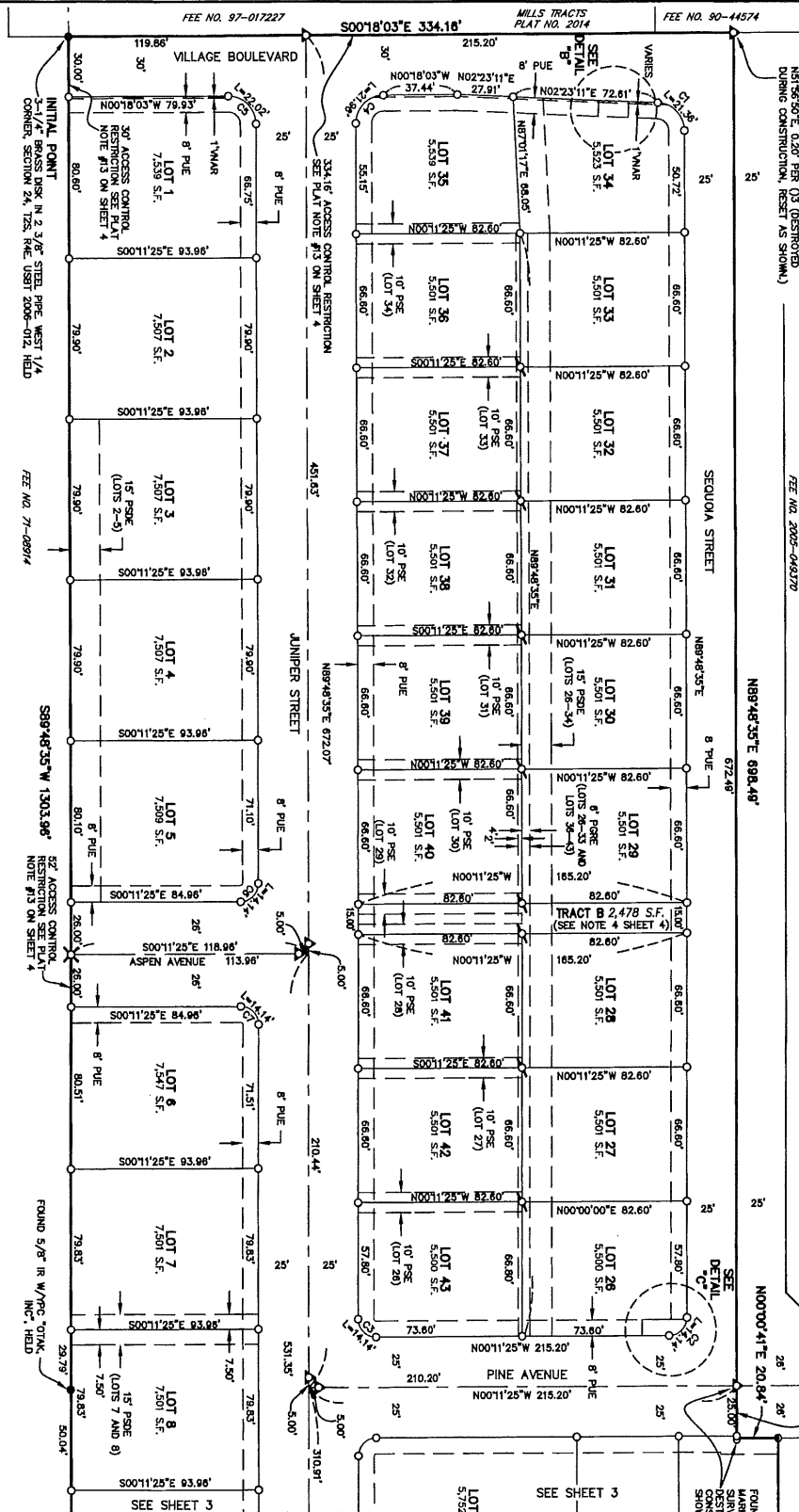
**ZION MEADOWS**

A REPLAT OF TRACTS D AND E, SANDY MEADOWS PLAT NO. 3914, TOGETHER WITH OTHER LANDS SITUATED IN THE NW 1/4 OF SECTION 24, T2S, R4E, W1M, CITY OF SANDY, CLACKAMAS COUNTY, OREGON

SCALE 1" = 40'  
JULY 11, 2016

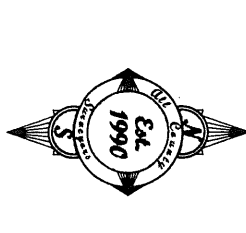


CURVE	LENGTH	RADIUS	DELTA	CHORD
C1	5.57'	14.00'	224°07'	57924.33' W, 5.53'
C2	13.14'	9.00'	83°174"	N42°00'02" W, 12.00'
C3	14.14'	9.00'	90°00'00"	N44°48'35" E, 12.73'
C4	21.86'	14.00'	89°53'22"	S45°14'44" E, 19.78'
C5	22.02'	14.00'	90°03'38"	S44°51'16" W, 19.82'
C6	14.14'	9.00'	90°00'00"	N45°11'25" W, 12.73'
C7	14.14'	9.00'	90°00'00"	S44°48'35" W, 12.73'
C8	15.29'	14.00'	64°37'25"	S44°41'52" W, 14.97'
C9	5.57'	14.00'	224°00'1"	S78°24'38" W, 5.53'
C27	13.14'	9.00'	83°174"	N42°00'02" W, 12.00'
C28	1.00'	9.00'	622°46"	N87°00'02" W, 1.00'



Surveyors & Planners, Inc.  
Sandy, Oregon  
1100 N. Oregon Street, Suite 200  
Sandy, Oregon 97055  
Phone: (503) 668-5151  
Fax: (503) 668-4730  
Subject to standard construction survey conditions  
SHEET 2 OF 4

REGISTERED PROFESSIONAL LAND SURVEYOR  
OREGON  
JANUARY 23, 1990  
DALE E. HULT  
RENEWED 07/01/17



DWG NUMBER: 14-264 FINAL Plat.dwg  
SHEET 2 OF 4

**LEGEND**

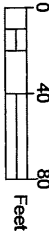
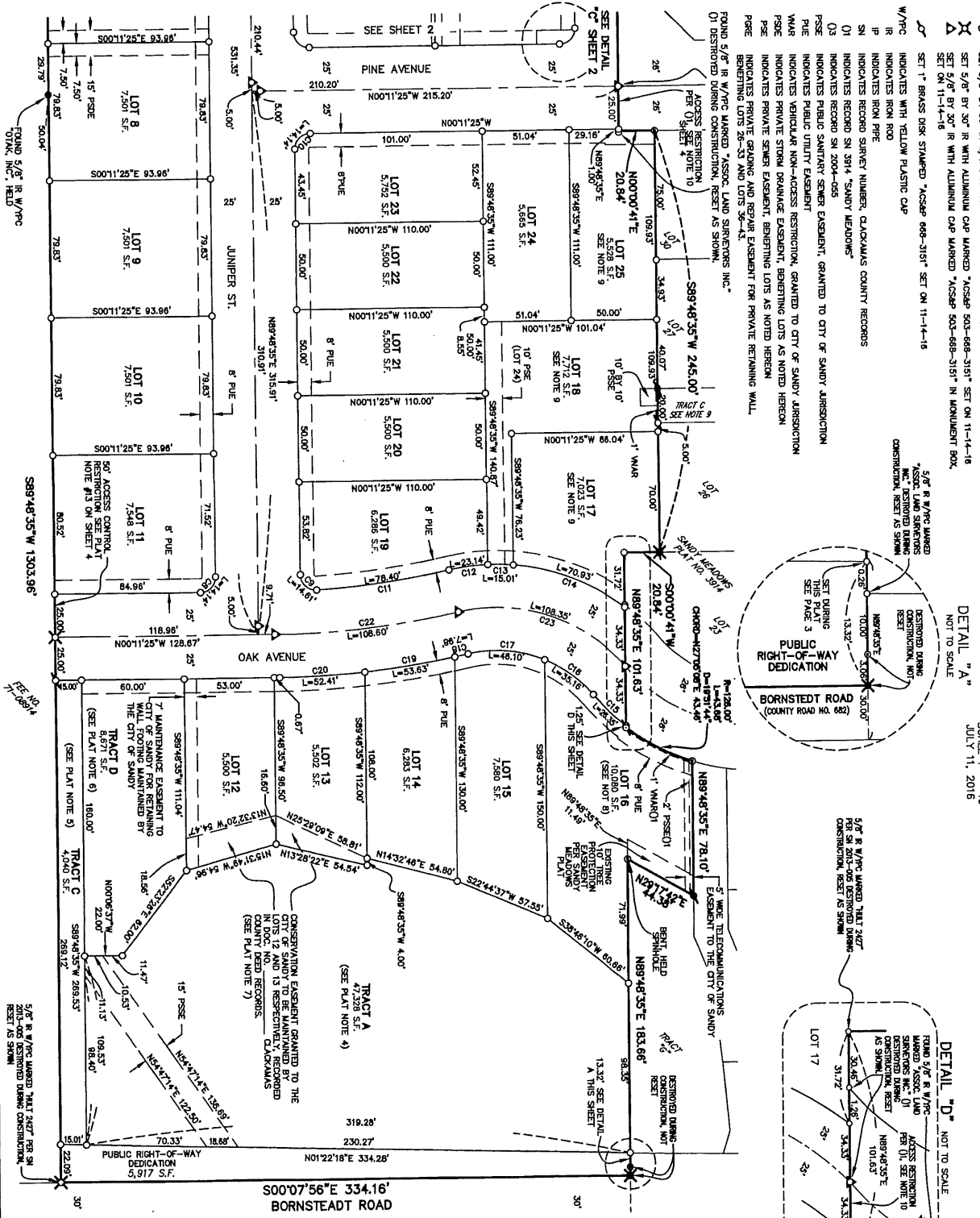
- FOUND MONUMENT AS NOTED HEREON
- FOUND BRASS SPERRY AND 1/2" BRASS TIE MARKED "L.S. 1976" PER O.I. HEAD UNLESS OTHERWISE NOTED
- FOUND 5/8" IR W/PPC MARKED "ASSOC. LAND SURVEYORS INC. PER O.I. HEAD UNLESS OTHERWISE NOTED
- FOUND 5/8" IR W/PPC MARKED "PLAT 2427" PER SN 2013-005, HEAD UNLESS OTHERWISE NOTED
- SET 5/8" BY 30" IR W/PPC MARKED "ACSP# 503-668-3151" SET ON 11-14-18
- SET 5/8" BY 30" IR WITH ALUMINUM CAP MARKED "ACSP# 503-668-3151" SET ON 11-14-18
- SET 5/8" BY 30" IR WITH ALUMINUM CAP MARKED "ACSP# 503-668-3151" IN MONUMENT BOX, SET ON 11-14-18
- SET 1" BRASS DISK STAMPED "ACSP# 668-3151" SET ON 11-14-18
- INDICATES WITH YELLOW PLASTIC CAP
- INDICATES IRON ROD
- INDICATES RAIN PIPE
- INDICATES RECORD SURVEY NUMBER, CLACKAMAS COUNTY RECORDS
- INDICATES RECORD SN 3914 "SANDY MEADOWS"
- INDICATES RECORD SN 2004-035
- INDICATES PUBLIC SANITARY SEWER EASEMENT, GRANTED TO CITY OF SANDY JURISDICTION
- INDICATES PUBLIC UTILITY EASEMENT
- INDICATES VEHICULAR NON-ACCESS RESTRICTION, GRANTED TO CITY OF SANDY JURISDICTION
- INDICATES PRIVATE STORM DRAINAGE EASEMENT, BENEFITING LOTS AS NOTED HEREON
- INDICATES PRIVATE SEWER EASEMENT, BENEFITING LOTS AS NOTED HEREON
- INDICATES PRIVATE GRADING AND EXCAVATION EASEMENT FOR PRIVATE REMAINING WALL, BENEFITING LOTS 25-29 AND LOTS 30-34
- ROUND 5/8" IR W/PPC MARKED "ASSOC. LAND SURVEYORS INC."
- DESTROYED BRASS CONSTRUCTION RESET AS SHOWN

**ZION MEADOWS**

A REPLAT OF TRACTS D AND E, SANDY MEADOWS PLAT NO. 3914, TOGETHER WITH OTHER LANDS SITUATED IN THE NW 1/4 OF SECTION 24, T2S, R4E, W.M., COUNTY OF SANDY, CLACKAMAS COUNTY, OREGON

SCALE 1" = 40'  
JULY 11, 2016

BOOK 147 PAGE 015  
PLAT NO. 4485



CURVE	LENGTH	RADIUS	DELTA	CHORD
C8	14.14'	9.00'	N46°12'25" W 12.73'	
C9	14.61'	9.00'	S29°29'15" E N43°18'57" E 13.06'	
C10	14.44'	9.00'	S00°00'00" E S45°12'25" E 12.73'	
C11	78.40'	475.00'	N07°54'22" W 78.31'	
C12	23.14'	125.00'	103°09'28" E S07°19'51" E 23.11'	
C13	15.01'	125.00'	S02°24'50" W 15.01'	
C14	70.83'	320.00'	S21°06'36" E S21°06'36" W 69.98'	
C15	26.35'	125.00'	N20°44'01" E N43°24'17" E 26.30'	
C16	35.16'	75.00'	S29°15'34" E S38°00'50" W 34.84'	
C17	44.10'	75.00'	S31°31'08" E S09°58'29" W 45.38'	
C18	7.98'	\$25.00'	0°52'15" E N12°11'57" W 7.98'	
C19	53.63'	\$25.00'	S51°11'11" E N03°50'12" W 53.61'	
C20	52.41'	\$25.00'	S74°51'31" E N03°50'12" W 52.39'	
C21	108.60'	\$90.00'	N26°24'45" W 108.38'	
C23	108.35'	100.00'	S27°04'42" E S27°41'17" W 103.12'	

REGISTERED PROFESSIONAL LAND SURVEYOR  
DALE H. HALL  
RENEWED 07/01/17

**Surveyors & Planners, Inc.**  
Surveying, Planning and Civil Engineering  
110, Box 955 Sandy, OR 97055  
Phone: (503) 868-5151  
Subject to General Conditions 2006, 9  
DRAW NUMBER: 14-264 FINAL Picturing SHEET 3 OF 4

